



# ROLTA PHOTOGRAMMETRY NUCLEUS

Rolta Photogrammetry Nucleus includes the functionality of Project management.

Project Management provides the Photogrammetry data management tools required for a production workflow. It has a wide range of auxiliary functions designed to simplify and optimize project processing.

## Photogrammetry Manager

The Photogrammetry Manager helps manage large jobs with the speed and flexibility needed for maximum efficiency in production. It provides for flexible project management, simple project layout, interactive point measurement, blunder detection and easy to use interface.

## Model Setups

It allows for easy import of third party triangulation packages for project creation in its native format. A well guided workflow based procedure makes for effortless job operation. Ability to perform Interior orientation, Single Photo Resection, Relative Orientation, and Absolute Orientation on digital aerial photographs.

## Image Utility - Faster Job Processing

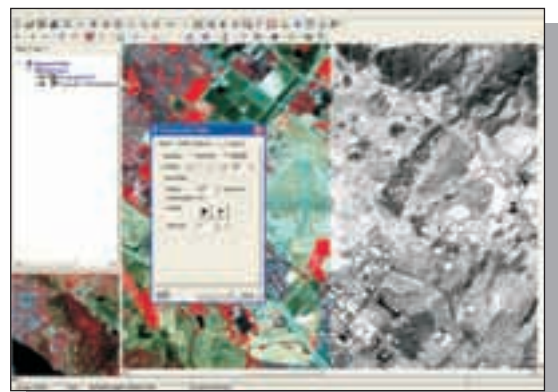
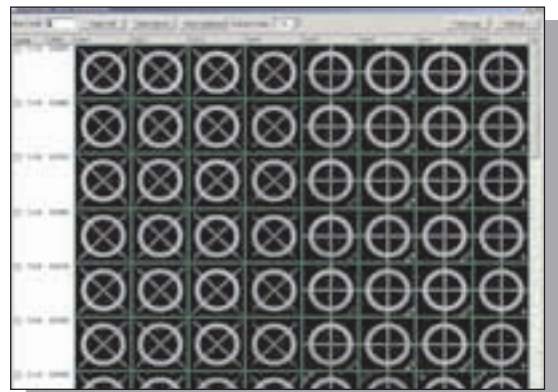
It enables a onetime set up for the whole project. It delivers image project management with automatic interior orientation, image pyramid generation, image rotations and image enhancement. Effective batch processing for increased efficiency and productivity.

## Powerful Feature Editing Tools - 2D

A highly efficient, powerful vector collection and editing package makes for the most practical mapping tool today. It is easy to learn and offers fast data acquisition on orthophotos, powerful data storage and specialized mapping applications.

## Rolta Image Manager

It is an application for viewing, enhancing and examining the remotely sensed raster imagery. It includes useful display tools such as fast roam, zoom, blend, flicker, swipe, image enhancement and numeric value display. It has layer management facility to handle multiple raster data in a single view port. The advanced tool like dynamic image enhancement allows the user to enhance the quality of the raster display dynamically while panning



## Key Features

- Camera and coordinate file maintenance including definition and editing
- Fully automatic and manual interior orientation
- Batch image rotation
- Simple project layout allowing viewing of all photos and data
- Model import capability in orientation program
- Powerful yet easy to use interactive applications
- Fast keypad application support
- Cursor masking hides vectors around cursor and cursor magnifier enlarges image around cursor
- Object oriented Python user programming language support
- Unattended global editing with batch applications
- Tracking devices – It supports several System Mouse, Immersion Device, Trackball, Stealth 3D (Immersion & USB)
- Dynamic image enhancement tool while visualization of raster data

## Benefits

- Easy to use interface allows the setting up, reading and export of aerial/satellite triangulation readings on unlimited sized blocks
- Ability to move photos and strips interactively in project layout
- Project management tasks can be performed in interactive and batch mode
- Inexpensive method of independent model measurement - does not require stereo hardware for monoscopic measurements
- Results windows provide immediate feedback to the operator on measurements taken
- Strong programming support with Function Keys and Macros
- Pragmatic set of mapping applications and batch routines and support for analog, analytical and softcopy stereo plotters
- Basic image enhancement tool for both visualization of raster data



## Rolta India Limited

### West

#### Central & Registered Office

Rolta Tower A,  
 Rolta Technology Park,  
 MIDC, Andheri (E),  
 Mumbai 400093.  
 Tel: +91 (22) 2926 6666  
 Fax: +91 (22) 2836 5992  
 Email: indsales@rolta.com

#### Corporate Office

21st Floor, Maker Tower F,  
 Cuffe Parade, Mumbai - 400 005.  
 Tel: +91 (22) 2215 3984  
 Fax: +91 (22) 2215 3994

### Pune

101, Mantri House,  
 929, Fergusson College Road,  
 Pune - 411 004.  
 Tel : +91 (20) 2565 3772,  
 2567 8372

### Vadodara

303 / 304 Concorde, 3rd Floor,  
 R. C. Dutt Road,  
 Alkapuri,  
 Vadodara - 390 005.  
 Tel : +91 (265) 235 2612,  
 232 2949

### Gandhinagar

Plot No. 565 / 1, Sector 8 C,  
 Gandhinagar - 382 008.  
 Tel : +91 (79) 2324 1322

### Bhopal

2nd Floor, Harrison House,  
 6 Malviya Nagar,  
 Raj Bhavan Road,  
 Bhopal - 462 003.

### East

#### Kolkata

501, Lords, 7/1 Lord Sinha Road,  
 Kolkata - 700 071.  
 Tel : +91 (33) 2282 5756 /  
 7092

#### Bhubaneshwar

47, Madhusudan Nagar,  
 Bhubaneshwar - 751 001.  
 Tel : +91 (674) 239 0190

### North

#### Delhi NCR

Rolta Technology Park,  
 Plot #187, Phase I,  
 Udyog Vihar, Gurgaon - 122  
 016.  
 Tel : +91 (124) 439 7000

#### Chandigarh

SCO - 840, 2nd Floor,  
 Shivalik Enclave, NAC, Manimajra,  
 Chandigarh - 160 101.  
 Tel : +91 (172) 273 0254 /  
 3728

### Dehradun

2nd Floor, Raj Plaza, 75, Rajpur  
 Road, Dehradun - 248 001.  
 Tel : +91 (135) 274 2474

### South

#### Chennai

Century Plaza, 6th Floor,  
 561 / 562 Mount Road,  
 Chennai - 600 018.  
 Tel : +91 (44) 2432 9107,  
 2434 9634

#### Bangalore

Mittal Towers, 'C' Wing, 8th Floor,  
 47 / 6, M. G. Road,  
 Bangalore - 560 001.  
 Tel : +91 (80) 2558 1614 /  
 1623

#### Hyderabad

White House, Block III,  
 2nd floor, No. 6-3-1192/1/1,  
 Kundanbagh, Begumpet,  
 Hyderabad, Andhra Pradesh.  
 Tel: +91 (40) 2330 6806,  
 2339 1083